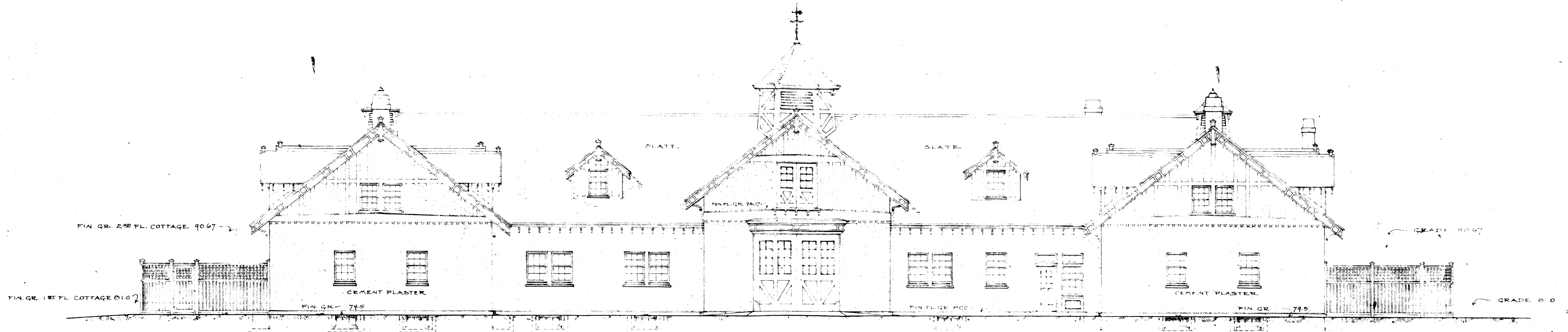


• STABLE AND GARAGE •  
 • HATLEY PARK VICTORIA BRITISH COLUMBIA •  
 • FOR THE HONORABLE JAMES DUNSMUIR •

• HOWLAND & CHANDLER ARCHITECTS } ASSOCIATED • 31 BEACON ST.  
 • BRETT & HALL LANDSCAPE ARCHITECTS } • BOSTON MASS.



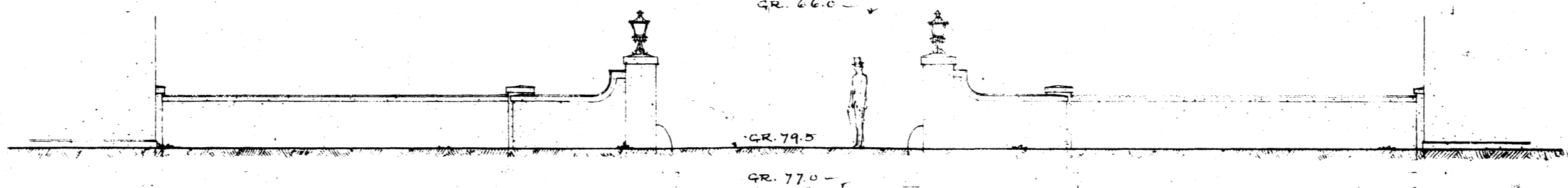
FIN. GR. BASEMENT 72.0

GR. 70.0

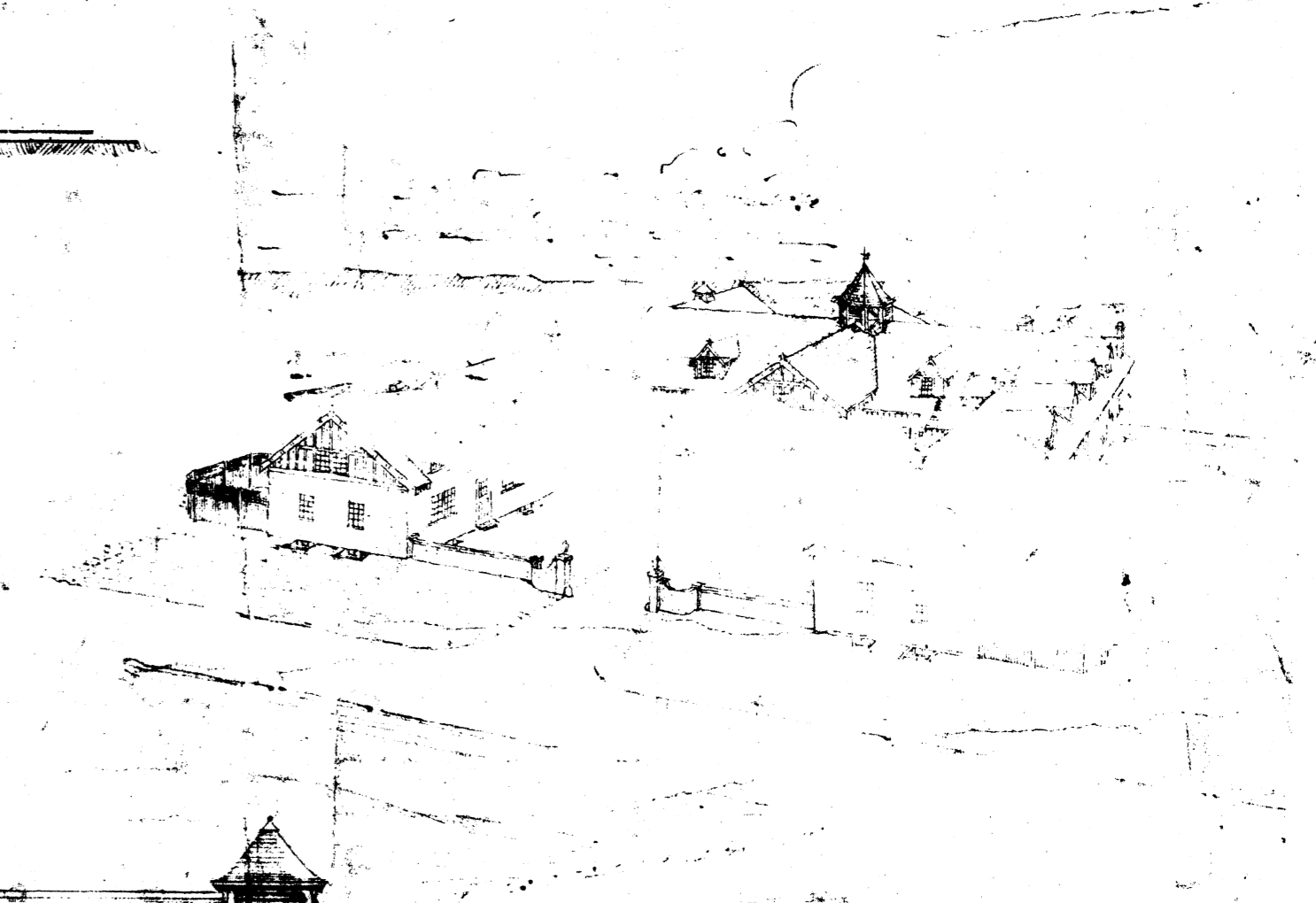
WEST ELEVATION  
 FIN. GR. BASEMENT FLOOR 60.0

GR. 70.0

GRADE 78.0



ENTRANCE TO COURT

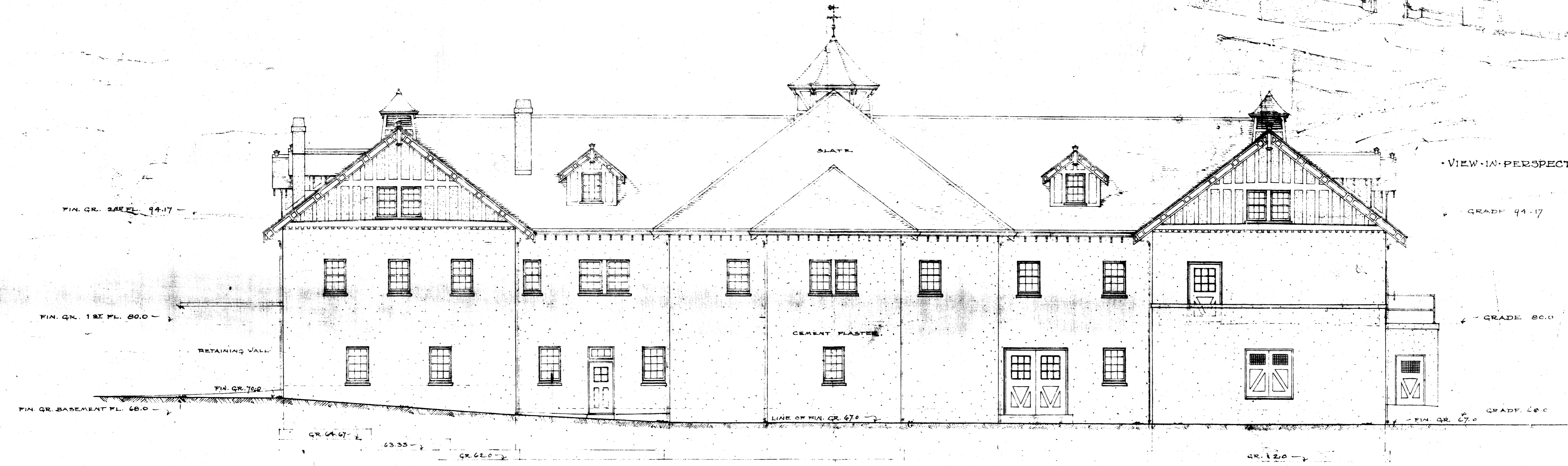


VIEW IN PERSPECTIVE

GRADE 94.17

GRADE 80.0

GRADE 60.0



FIN. GR. 2nd FL. 94.17

FIN. GR. 1st FL. 80.0

RETAINING WALL

FIN. GR. 76.2

FIN. GR. BASEMENT FL. 60.0

GR. 64.7

GR. 63.55

GR. 62.0

LINE OF FIN. GR. 67.0

GR. 67.0

FIN. GR. 67.0

NOTE - FOOTINGS TO BE GRADED LOWER IF NECESSARY -

EAST ELEVATION

DRAWING OF ELEVATIONS  
 SCALE - 1/4" = 1'-0"