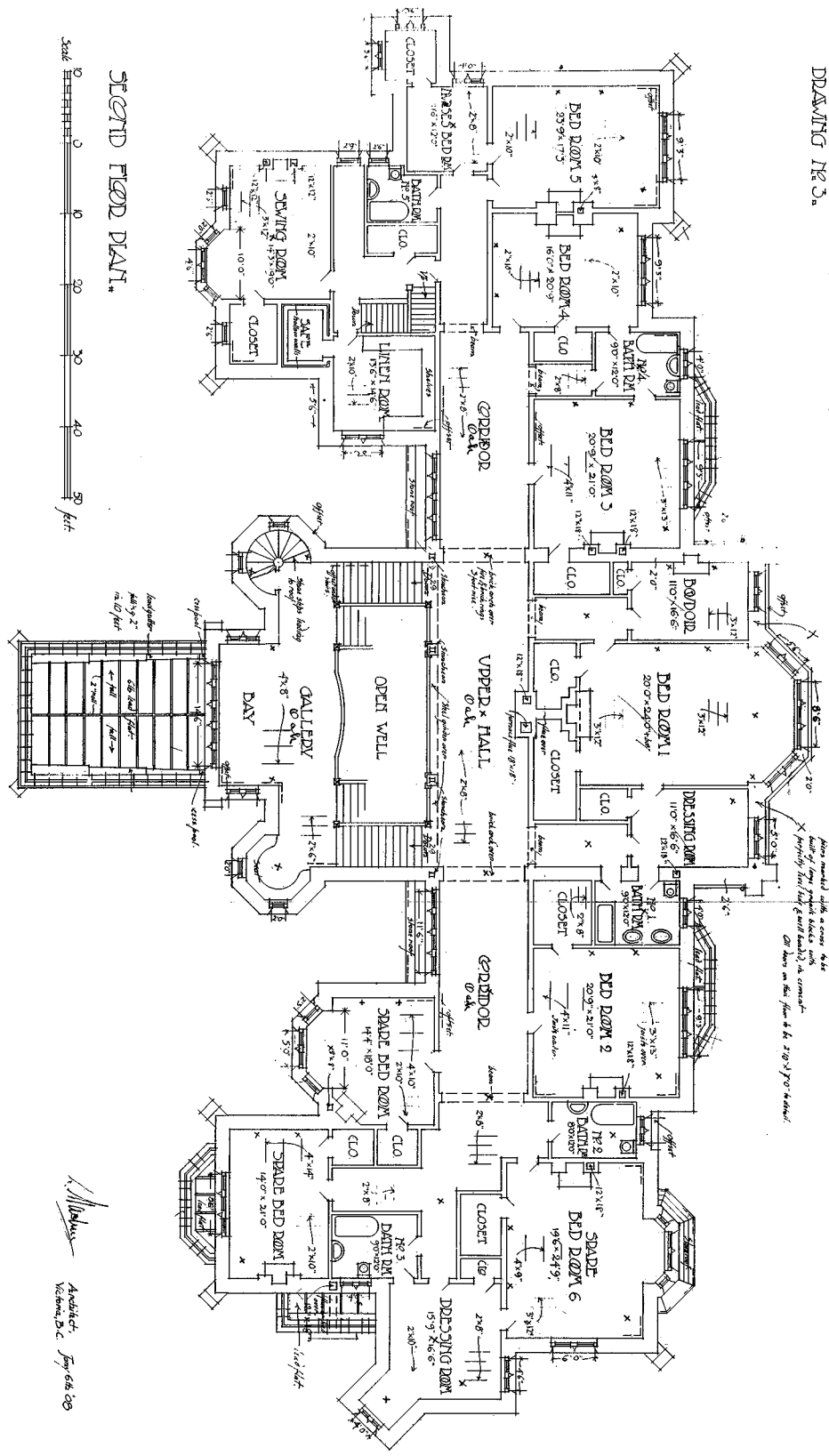


RESIDENCE FOR MR. JAMES WITSMUD
 AT FATEY PARK, VICTORIA, D.C.
 DRAWING NO. 3.



SECOND FLOOR PLAN



Notes: 1. Doors marked with a cross are left hand opening. 2. Doors marked with a dot are right hand opening. 3. Doors marked with a circle are double doors. 4. Doors marked with a triangle are sliding doors. 5. Doors marked with a square are folding doors. 6. Doors marked with a diamond are swinging doors. 7. Doors marked with a star are revolving doors. 8. Doors marked with a plus sign are automatic doors. 9. Doors marked with a minus sign are fire doors. 10. Doors marked with a cross-hatch are storm doors. 11. Doors marked with a vertical line are glass doors. 12. Doors marked with a horizontal line are metal doors. 13. Doors marked with a diagonal line are wood doors. 14. Doors marked with a wavy line are fabric doors. 15. Doors marked with a solid black shape are solid doors. 16. Doors marked with a white shape are hollow doors. 17. Doors marked with a dotted shape are perforated doors. 18. Doors marked with a dashed shape are translucent doors. 19. Doors marked with a solid grey shape are opaque doors. 20. Doors marked with a solid black shape are solid doors.

COLOR REFERENCE: Grey - Stone, Red - Brick, Yellow - Wood.

Architect: J. W. Wilson
 Victoria, B.C. May 28, 1908